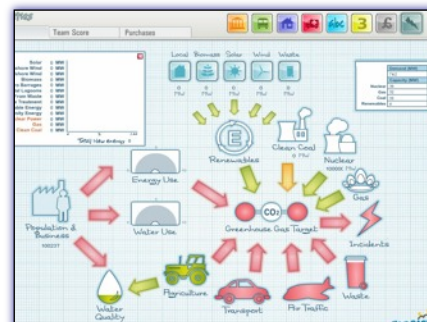


NEW
Licence
Version

"[An] innovative approach to tackling climate change agenda / issues. Provided a way to understand the importance of why organisations should work together to gain maximum value."



Learning Simulation on Climate Change

Planit4CAST improves leadership and decision-making on climate change adaptation and mitigation.

Planit4CAST models the life of a virtual community with eight teams, that represent key partners such as Transport, Utilities, Town Hall, Housing, Health, Education, Development, Regulation and Emergency Services etc.

The partnership needs to implement the key climate change indicators over 20 years. Implementing both mitigation and adaptation strategies and considering economic, social and environmental factors. Delegates have to work together to solve problems, understand cause & effect, and develop win-wins.

The simulation allows delegates to get the opportunity to make decisions in a safe virtual world and see immediately the outcomes of those decisions. The approach is tried and tested (450+ workshops) and is an excellent way to create dialogue and build relationships that encourage more effective decision-making, joint working and collaborative relationships.

Climate Change Objectives:

- Understanding the economics of climate change.
- Understanding the importance of climate change and the consequences of different decisions.
- Understanding the importance of collaborative working in dealing with climate change.
- Making sure climate change is mainstreamed into organisational strategy and practices.

only
£499
+ VAT



Member Training
Community Engagement
Away days / Team building
Partnership Working
Awareness Raising
Community Leadership
Management Training

Ease of Use

The learning simulations are easy to use and are supplied with a comprehensive trainer guide. In simulation all of the purchases, report icons, and score elements can be clicked to reveal how their current status has been calculated and how to improve it.

What you get:

- A branded learning simulation.
- Worksheets and team labels.
- Trainer guide.

Just add a laptop, projector and dry wipe markers, and you're ready to deliver engaging workshops that will get your messages across.